

DC Tubular Motor User Manual

Built-in Lithium Battery Electronic Limit(V04)

01 Features

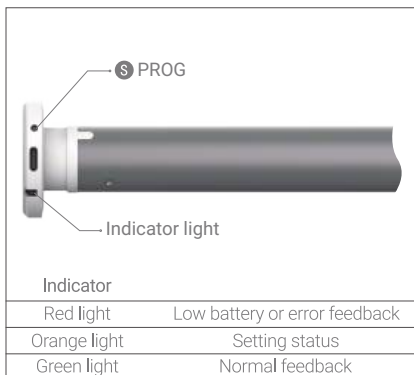
- Remote control ●
- Electronic limit ●
- Preferred stop position ●
- Gentle start gentle stop ●
- Stop while obstructed ●
- Rotation direction switch ●
- Independent dimming ●
- Memorized limits ●
- Adjustable speed ●
- Built-in Lithium battery ●

02 Attention

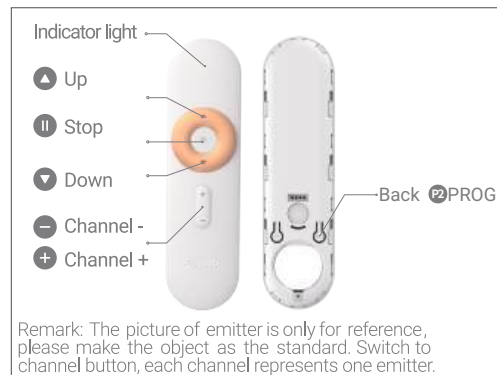
- This product is for indoor use only, do not use in damp environment or outdoors.
- Pay attention to moisture-proof, do not sprinkle water or other liquid on this product.
- Do not place the product near the heat source.
- If the product failure in use, please do not attempt to repair it by yourself, this should be done by an authorized professional.

03 Product description

Motor



Emitter

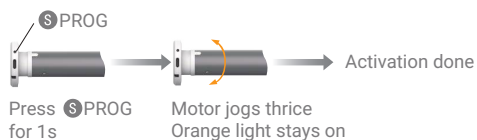


| Model | Charging Status Description | Status |
|--|---|---------------|
| LE/LEC/LET/LEZY/LEBY Lithium battery series | Press wireless emitter's ▲ or ▼, the motor indicator GREEN light flashes 2 times. | Charging |
| | Press wireless emitter's ▲ or ▼, the motor indicator GREEN light stays on. | Fully charged |
| Low battery alert | | |
| Press wireless emitter's any button, the motor indicator RED light flashes 5 times, please charge in time. | | |

04 Operation steps

Note: Except motor goes up and down, operation success will feedback by motor jogs.

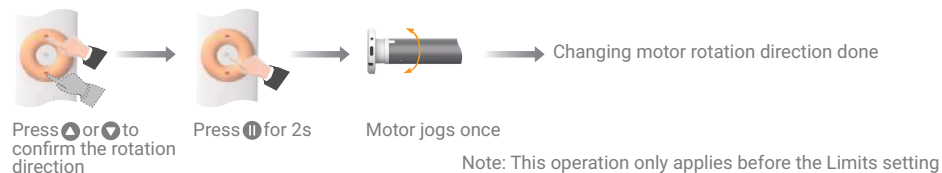
4.1 Activation



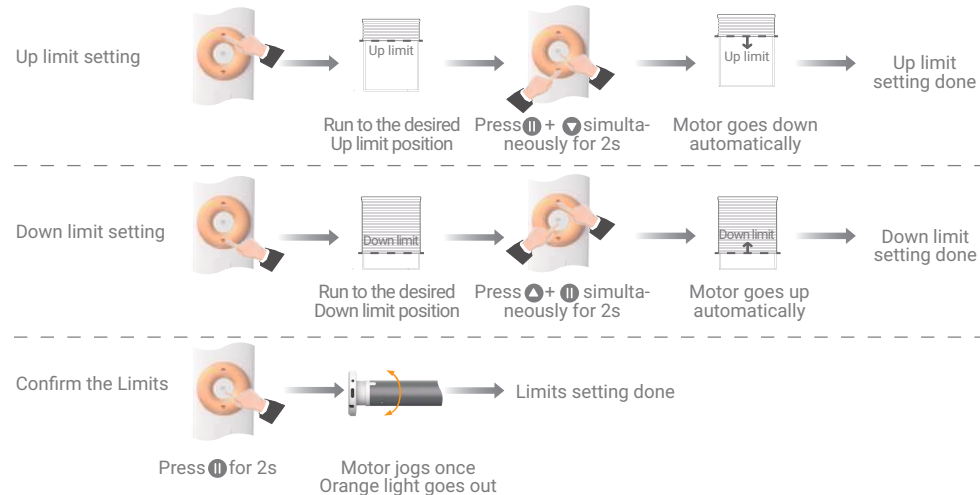
4.2 Pairing



4.3 Change rotation direction

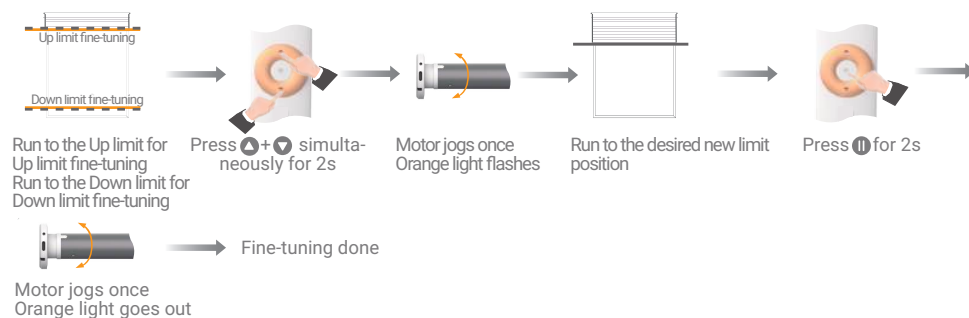


4.4 Limits setting (in Tilting mode now)



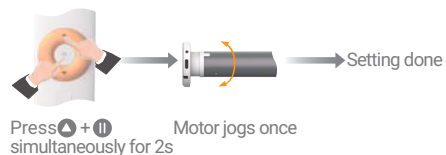
05 Function setting (should be proceeded after Step 04 done)

5.1 Limits fine-tuning

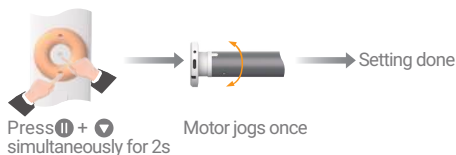


5.2 Speed Adjustment

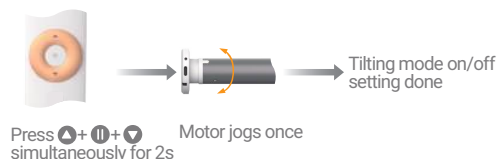
Set High speed:



Set Low speed:



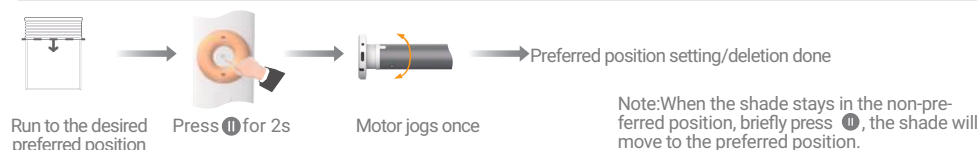
5.3 Tilting mode (default is off)



Note:

1. When the Tilting mode is off, press ▲ or ▼, the motor runs continuously.
2. When the Tilting mode is on, press ▲ or ▼ for less than 2s, the motor runs continuously.
3. When the Tilting mode is on, press ▲ or ▼ for more than 2s, the motor runs slowly and tilts the slats, release then the motor stops.

5.4 Preferred position setting/deletion (set only between the Up and Down limits)



Note: When the shade stays in the non-preferred position, briefly press II, the shade will move to the preferred position.

5.5 Adding emitter (each motor can be quipped with 12 emitters maximumly)

Method 1



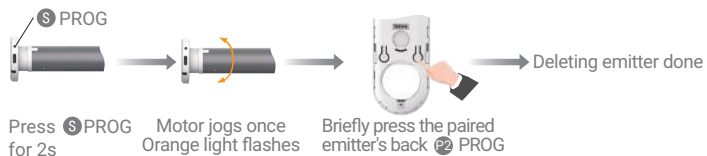
Method 2



5.6 Deleting emitter

Operation 1: Delete one by one (if only one emitter remains, it can not be deleted)

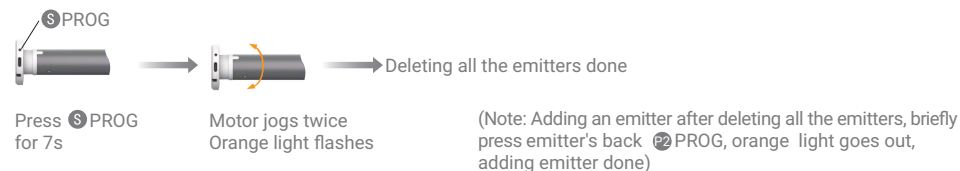
Method 1



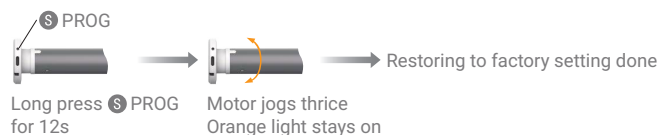
Method 2



Operation 2: Deleting all the emitters



06 Restore to factory setting (if operation error, reset after restoring to factory setting)



07 Applications (Please keep antennas away from metal obstructions during installation or placement to avoid signal interference or block)

Applications 1:

Built-in Lithium battery power supply, rechargeable via solar panel, instead of AC wall socket



Applications 2:

Built-in Lithium battery power supply, recharge via external charger, 4-8 months operation if fully charged



LED/DC 8.4V/0.5A Charger input
LE/DC 12.6V/0.5A Charger input
LET/LEZY/LEBY/DC 5V/2A Charger input